
Product Datasheet

DNA polymerase theta antibody (orb385434)

Description

DNA polymerase theta antibody


Species/Host

Rabbit

Reactivity

Human, Mouse, Porcine, Rat

Conjugation

Unconjugated

Tested Applications

ICC, IF, IHC-P, WB

Immunogen

KLH conjugated synthetic peptide derived from human DNA polymerase theta. Please contact us for the exact immunogen sequence. The peptide is available as orb13065.

Target

DNA polymerase theta. This antibody has specificity with DNA polymerase theta.

Form/Appearance

10 mM PBS, 0.02% sodium azide

Concentration

- 100 µg (in 200 µl): 0.5 mg/ml- 200 µg (in 400 µl): 0.5 mg/ml

Storage

Store at 4°C for up to two weeks. For long term storage, aliquot and store at -20°C, avoid freeze/thaw cycles.

Note

For research use only

Isotype

IgG

Clonality

Polyclonal

Purity

Polyclonal antibodies are purified by peptide affinity chromatography

MW

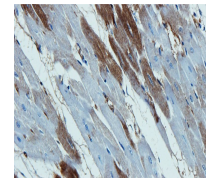
290 kDa

Uniprot ID
[Q8CGS6](#), [D4A628](#), [O75417](#)
NCBI
[955452](#), [199420](#)
Entrez
[10721](#)
Dilution Range

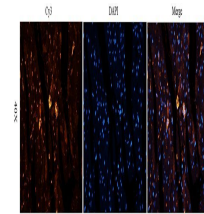
IHC-P: 1:50-500, IF/ICC: 1:50-500, WB: 1:200-1500

Expiration Date

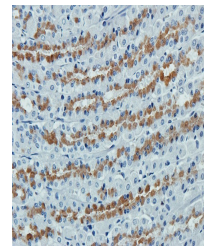
12 months from date of receipt.



Immunohistochemical staining of paraffin...



Immunofluorescence image of pig heart ti...



IHC-P staining of rat stomach tissue usi...