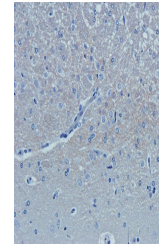


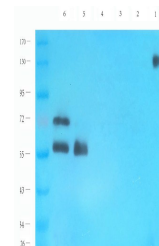
Product Datasheet

NCAM1 antibody (orb385433)

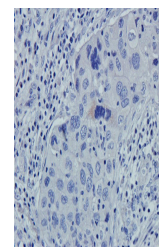
Description	NCAM1 antibody
Species/Host	Rabbit
Reactivity	Human, Mouse, Rat
Conjugation	Unconjugated
Tested Applications	IHC-P, WB
Immunogen	KLH conjugated synthetic peptide derived from human NCAM1. Please contact us for the exact immunogen sequence. The peptide is available as orb13064.
Target	NCAM1. This antibody has specificity with NCAM1.
Form/Appearance	10 mM PBS, 0.02% sodium azide
Concentration	- 100 µg (in 200 µl): 0.5 mg/ml- 200 µg (in 400 µl): 0.5 mg/ml
Storage	Store at 4°C for up to two weeks. For long term storage, aliquot and store at -20°C, avoid freeze/thaw cycles.
Note	For research use only
Isotype	IgG
Clonality	Polyclonal
Purity	Polyclonal antibodies are purified by peptide affinity chromatography
MW	95 kDa
Uniprot ID	P13595 , P13596 , P13591
NCBI	000615 , 000606
Entrez	4684
Dilution Range	IHC-P: 1:50-300, WB: 1:200-1500
Expiration Date	12 months from date of receipt.



IHC-P image of rat brain tissue using an...



WB analysis of mouse brain (lane 1), mos...



IHC-P image of human lung cancer tissue ...