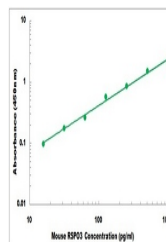


Product Datasheet

Mouse RSPO3 ELISA Kit (orb385398)

Description	Sandwich ELISA for quantitative detection of mouse RSPO3 concentrations.
Reactivity	Mouse
Range	15.6 pg/ml - 1000 pg/ml
Tested Applications	ELISA
Target	RSPO3
Storage	Shipped and store at 4°C for 6 months, store at -20°C for one year. Avoid freeze/thaw cycles.
Note	For research use only
Application notes	Detection Method: Colorimetric Sample Types: Cell Culture Supernates, Serum, Urine
Sample Types	Cell Culture Supernates, Serum, Plasma
Uniprot ID	Q2TJ95
Sensitivity	10 pg/ml
Entrez	72780
Expiration Date	Please enquire.



Representative Standard Curve