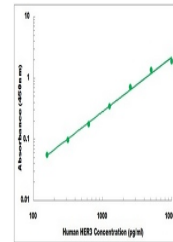


## Product Datasheet

### Human ERBB3 ELISA Kit (orb385293)

|                            |   |
|----------------------------|---|
| <b>Description</b>         | Sandwich ELISA for quantitative detection of human HER3 concentrations.                       |
| <b>Reactivity</b>          | Human   |
| <b>Range</b>               | 156 pg/ml - 10000 pg/ml   |
| <b>Tested Applications</b> | ELISA   |
| <b>Target</b>              | ERBB3   |
| <b>Storage</b>             | Shipped and store at 4°C for 6 months, store at -20°C for one year. Avoid freeze/thaw cycles. |
| <b>Note</b>                | For research use only   |
| <b>Application notes</b>   | Detection Method: Colorimetric Sample Types: Cell Culture Supernates, Serum, Urine            |
| <b>Sample Types</b>        | Cell Culture Supernates, Serum, Plasma  |
| <b>Uniprot ID</b>          | <b>P21860</b>   |
| <b>Sensitivity</b>         | 10 pg/ml  |
| <b>Entrez</b>              | <b>2065</b>   |
| <b>Expiration Date</b>     | Please enquire.   |



Representative  
Standard  
Curve