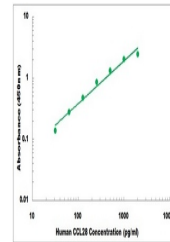


Product Datasheet

Human CCL28 ELISA Kit (orb385278)

Description	Sandwich ELISA for quantitative detection of human CCL28 concentrations.
Reactivity	Human
Range	31.2 pg/ml - 2000 pg/ml
Tested Applications	ELISA
Target	CCL28
Storage	Shipped and store at 4°C for 6 months, store at -20°C for one year. Avoid freeze/thaw cycles.
Note	For research use only
Application notes	Detection Method: Colorimetric Sample Types: Cell Culture Supernates, Serum, Urine
Sample Types	Cell Culture Supernates, Serum, Plasma
Uniprot ID	Q9NRJ3
Sensitivity	10 pg/ml
Entrez	56477
Expiration Date	Please enquire.



Representative
Standard
Curve