

---

## Product Datasheet

### ENaC beta Antibody (orb383764)

**Description**

Mouse Anti-Rat ENaC beta Monoclonal IgG1


**Species/Host**

Mouse

**Reactivity**

Mouse

**Conjugation**

Unconjugated

**Tested**

IHC, WB

**Applications**
**Immunogen**

Synthetic peptide from the C-terminal of Rat ENaC beta (aa. 617-638)

**Target**

ENaC beta

**Preservatives**

 PBS pH 7.4, 50% glycerol, 0.09% sodium azide  
 \*Storage buffer may change when conjugated

**Concentration**

1 mg/ml

**Storage**

-20°C

**Note**

For research use only

**Application notes**

A 1:1000 dilution of SMC-240 was sufficient for detection of ENaC beta in 15 µg of Mouse whole kidney lysate by ECL immunoblot analysis using goat anti-mouse IgG:HRP as the secondary antibody.

**Isotype**

IgG1

**Clonality**

Monoclonal

**MW**

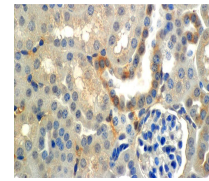
87kDa

**Uniprot ID**
[P37090](#)
**NCBI**
[NP\\_036780](#)
**Entrez**
[24767](#)
**Dilution Range**

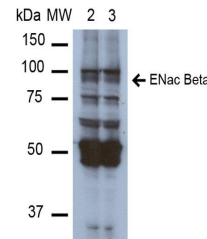
WB (1:1000); IHC-P (1:150)

**Expiration Date**

12 months from date of receipt.



Immunohistochemical staining of mouse Ki...



Western Blot analysis of mouse whole kid...