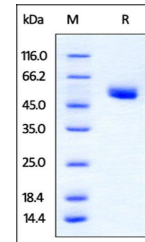


Product Datasheet

Rat CTLA-4 / CD152 Protein (orb383515)

Description	Rat CTLA-4, Fc Tag is expressed from human 293 cells (HEK293). It contains AA Ile 38 - Asp 161 (Acce...
Reactivity	Rat
Endotoxins	1.0 EU per µg
Conjugation	Unconjugated
Target	CTLA-4
Preservatives	Tris with Glycine, Arginine and NaCl, pH7.5
Form/Appearance	Powder
Storage	-20°C
Tag	C-Fc
Note	For research use only
Application notes	This protein carries a human IgG1 Fc tag at the C-terminus. The protein has a calculated MW of 40.2 kDa. The protein migrates as 50-55 kDa under reducing (R) condition (SDS-PAGE).
Protein Sequence	Ile 38 - Asp 161
Purity	95%
Source	Rat CTLA-4, Fc Tag (orb383515) is expressed from human 293 cells (HEK293). It contains AA Ile 38 - Asp 161 (Accession # Q62859).
MW	40.2 kDa
Uniprot ID	Q62859
Expiration Date	6 months from date of receipt.



SDS-PAGE analysis of CTLA4 Proteins