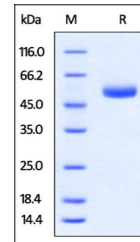


Product Datasheet

Rabbit CTLA-4 / CD152 Protein (orb383514)

Description	Rabbit CTLA-4, Fc Tag is expressed from human 293 cells (HEK293). It contains AA Lys 36 - Asp 161 (A...
Reactivity	Rabbit
Endotoxins	1.0 EU per µg
Conjugation	Unconjugated
Target	CTLA-4
Preservatives	Tris with Glycine, Arginine and NaCl, pH7.5
Form/Appearance	Powder
Storage	-20°C
Tag	C-Fc
Note	For research use only
Application notes	This protein carries a human IgG1 Fc tag at the C-terminus. The protein has a calculated MW of 40.3 kDa. The protein migrates as 50-55 kDa under reducing (R) condition (SDS-PAGE) due to glycosylation.
Protein Sequence	Lys 36 - Asp 161
Purity	95%
Source	Rabbit CTLA-4, Fc Tag (orb383514) is expressed from human 293 cells (HEK293). It contains AA Lys 36 - Asp 161 (Accession # P42072).
MW	40.3 kDa
Uniprot ID	P42072
Expiration Date	6 months from date of receipt.



SDS-PAGE analysis of CTLA4 Proteins