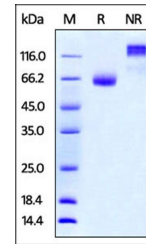


## Product Datasheet

### Mouse PD-L2 / B7-DC Protein (orb383511)

<b>Description</b>	Mouse PD-L2, Fc Tag is expressed from human 293 cells (HEK293). It contains AA Leu 20 - Arg 219 (Acc...
<b>Reactivity</b>	Mouse
<b>Endotoxins</b>	1.0 EU per µg
<b>Conjugation</b>	Unconjugated
<b>Target</b>	PD-L2
<b>Preservatives</b>	Tris with Glycine, Arginine and NaCl, pH7.5
<b>Form/Appearance</b>	Powder
<b>Storage</b>	-20°C
<b>Tag</b>	C-Fc
<b>Note</b>	For research use only
<b>Application notes</b>	This protein carries a human IgG1 Fc tag at the C-terminus. The protein has a calculated MW of 49.2 kDa. As a result of glycosylation, the protein migrates as 60-70 kDa under reducing (R) condition, and 120-140 kDa under non-reducing (NR) condition (SDS-PAGE).
<b>Protein Sequence</b>	NP_067371
<b>Purity</b>	95%
<b>Source</b>	Mouse PD-L2, Fc Tag (orb383511) is expressed from human 293 cells (HEK293). It contains AA Leu 20 - Arg 219 (Accession # NP_067371).
<b>MW</b>	49.2 kDa
<b>Uniprot ID</b>	<a href="#">Q9WUL5</a>
<b>NCBI</b>	<a href="#">NP_067371</a>
<b>Expiration Date</b>	6 months from date of receipt.



SDS-PAGE analysis of Mouse PD-L2 protein