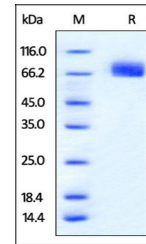


## Product Datasheet

### Mouse PD-L1 / B7-H1 Protein (orb383510)

<b>Description</b>	Mouse PD-L1, Mouse IgG2a Fc Tag, low endotoxin is expressed from human 293 cells (HEK293). It contai...
<b>Reactivity</b>	Mouse
<b>Endotoxins</b>	0.1 EU per µg
<b>Conjugation</b>	Unconjugated
<b>Target</b>	PD-L1
<b>Preservatives</b>	PBS, pH7.4
<b>Form/Appearance</b>	Powder
<b>Storage</b>	-20°C
<b>Tag</b>	C-mFc(mIgG2a)
<b>Note</b>	For research use only
<b>Application notes</b>	This protein carries a mouse IgG2a Fc tag at the C-terminus. The protein has a calculated MW of 51.8 kDa. The protein migrates as 65-85 kDa under reducing (R) condition (SDS-PAGE) due to glycosylation.
<b>Protein Sequence</b>	NP_068693
<b>Purity</b>	95%
<b>Source</b>	Mouse PD-L1, Mouse IgG2a Fc Tag, low endotoxin (orb383510) is expressed from human 293 cells (HEK293). It contains AA Phe 19 - Thr 238 (Accession # NP_068693).
<b>MW</b>	51.8 kDa
<b>NCBI</b>	<a href="#">NP_068693</a>
<b>Expiration Date</b>	6 months from date of receipt.



SDS-PAGE analysis of Mouse PD-L1 protein