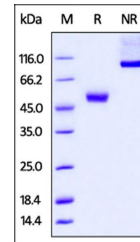


Product Datasheet

Human CTLA-4 / CD152 Protein (orb383500)

Description	Human CTLA-4 Protein, Mouse IgG2a Fc Tag is expressed from human 293 cells (HEK293). It contains AA ...
Reactivity	Human
Endotoxins	0.1 EU per µg
Conjugation	Unconjugated
Target	CTLA-4
Preservatives	50 mM Tris, 100 mM Glycine, pH7.5
Form/Appearance	Powder
Storage	-20°C
Tag	C-mFc(mlgG2a)
Note	For research use only
Application notes	This protein carries a mouse IgG2a Fc tag at the C-terminus. The protein has a calculated MW of 40.6 kDa. The protein migrates as 50 kDa on a SDS-PAGE gel under reducing (R) condition due to glycosylation and 100 kDa under non-reducing (NR) condition.
Protein Sequence	NP_005205.2
Purity	95%
Source	Human CTLA-4, mouse IgG2a Fc tag, low endotoxin (orb383500) is expressed from human 293 cells (HEK293). It contains AA Ala 37 - Phe 162 (Accession # P16410-1).
MW	40.6 kDa
Uniprot ID	P16410
NCBI	NP_005205.2
Expiration Date	6 months from date of receipt.



SDS-PAGE analysis of CTLA4 Proteins