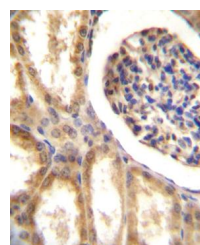
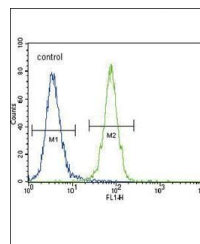


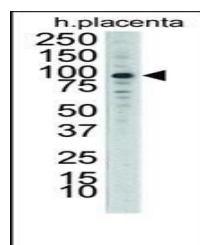
Product Datasheet

DDR1 antibody (orb38336)

Description	Purified rabbit polyclonal antibody.
Species/Host	Rabbit
Reactivity	Human, Rat
Conjugation	Unconjugated
Tested Applications	FC, IHC-P, WB
Immunogen	Synthetic Peptide
Target	DDR1
Form/Appearance	Purified polyclonal antibody supplied in PBS with 0.09% (W/V) sodium azide. This antibody is purified through a protein A column, followed by peptide affinity purification.
Storage	Maintain refrigerated at 2-8°C for up to 2 weeks. For long term storage store at -20°C in small aliquots to prevent freeze-thaw cycles
Note	For research use only
Isotype	Rabbit IgG
Clonality	Polyclonal
MW	101128
Uniprot ID	Q08345
NCBI	NP_054699.2 , NP_054700.2 , NP_001945.3 , NP_001189452.1 , NP_001189450.1 , NP_001189451.1
Dilution Range	WB: 1:1000, IHC-P: 1:10-50, FACS: 1:10-50
Expiration Date	12 months from date of receipt.



Immunohistochemical staining of paraffin...



Western blot analysis of Placenta lysate...