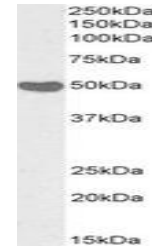


Product Datasheet

CREB3L4 antibody (Biotin) (orb382921)

Description	Goat polyclonal antibody against CREB3L4 conjugated to Biotin.
Species/Host	Goat
Reactivity	Human
Conjugation	Unconjugated
Tested Applications	ELISA, IHC, WB
Target	AIBZIP / CREB3L4, Biotinylated
Preservatives	Supplied at 0.5 mg/ml in Tris saline, 0.02% sodium azide, pH 7.3 with 0.5% bovine serum albumin. Aliquot and store at -20°C. Minimize freezing and thawing.
Storage	Aliquot and store at -20°C. Minimize freezing and thawing.
Note	For research use only
Application notes	WB: Approx 50kDa band observed in Human Placenta lysates (calculated MW of 43.4kDa according to NP_570968.1). See non-biotinylated parental product's datasheet for further QC data. Recommended concentration: 1-3
Protein Sequence	CPSGRIRSVLHADEM.
Clonality	Polyclonal
MW	43.4; 41.3
Entrez	148327
Dilution Range	ELISA: 1:32000, WB: 1-3 µg/ml
Expiration Date	12 months from date of receipt.



Western blot of Human Placenta lysate us...