
Product Datasheet

KLRC2 antibody (orb382919)

Description

KLRC2 antibody

Species/Host

Rabbit

Reactivity

Guinea pig, Human, Mouse, Rat

Conjugation

Unconjugated

Tested Applications

ICC, IF, IHC-P, WB

Immunogen

KLH conjugated synthetic peptide derived from human KLRC2. Please contact us for the exact immunogen sequence. The peptide is available as orb13061.

Target

KLRC2

Form/Appearance

10 mM PBS, 0.02% sodium azide

Concentration

- 100 µg (in 200 µl): 0.5 mg/ml- 200 µg (in 400 µl): 0.5 mg/ml

Storage

Store at 4°C for up to two weeks. For long term storage, aliquot and store at -20°C, avoid freeze/thaw cycles.

Note

For research use only

Isotype

IgG

Clonality

Polyclonal

Purity

Polyclonal antibodies are purified by peptide affinity chromatography

MW

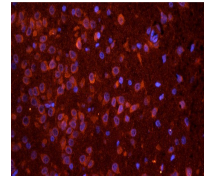
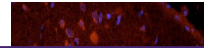
26 kDa

Uniprot ID
[O54871](#), [Q9WTJ9](#), [P26717](#)
NCBI
[002251](#), [002260](#)
Entrez
[3822](#)
Dilution Range

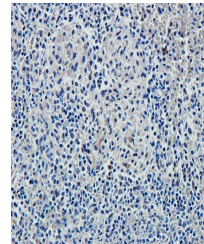
IF/ICC: 1:50-400, IHC-P: 1:50-400, WB: 1:200-1500

Expiration Date

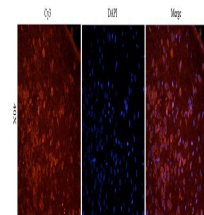
12 months from date of receipt.



IF image of rat brain tissue using anti-...



Immunohistochemical staining of paraffin...



Immunofluorescence image of rat brain ti...