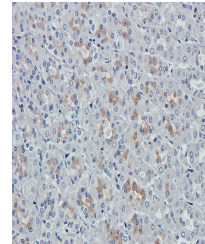


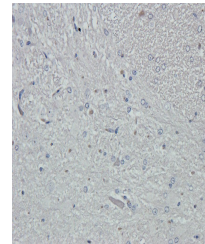
## Product Datasheet

### VAMP7 antibody (orb382918)

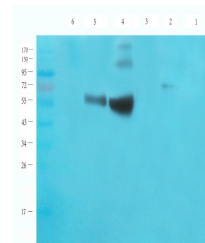
|                            |  |
|----------------------------|--|
| <b>Description</b>         | VAMP7 antibody   |
| <b>Species/Host</b>        | Rabbit   |
| <b>Reactivity</b>          | Guinea pig, Human, Mouse, Rat  |
| <b>Conjugation</b>         | Unconjugated   |
| <b>Tested Applications</b> | IHC-P, WB  |
| <b>Immunogen</b>           | KLH conjugated synthetic peptide derived from human VAMP7. Please contact us for the exact immunogen sequence. The peptide is available as orb13060. |
| <b>Target</b>              | VAMP7  |
| <b>Form/Appearance</b>     | 10 mM PBS, 0.02% sodium azide  |
| <b>Concentration</b>       | - 100 µg (in 200 µl): 0.5 mg/ml- 200 µg (in 400 µl): 0.5 mg/ml   |
| <b>Storage</b>             | Store at 4°C for up to two weeks. For long term storage, aliquot and store at -20°C, avoid freeze/thaw cycles.                                       |
| <b>Note</b>                | For research use only  |
| <b>Isotype</b>             | IgG  |
| <b>Clonality</b>           | Polyclonal   |
| <b>Purity</b>              | Polyclonal antibodies are purified by peptide affinity chromatography  |
| <b>MW</b>                  | 25 kDa   |
| <b>Uniprot ID</b>          | <a href="#">Q9JHW5</a> , <a href="#">P70280</a> , <a href="#">P51809</a>   |
| <b>Entrez</b>              | <a href="#">6845</a>   |
| <b>Dilution Range</b>      | IHC-P: 1:100-500, WB: 1:200-1500   |
| <b>Expiration Date</b>     | 12 months from date of receipt.  |



Immunohistochemical staining of rat stom...



IHC-P staining of rat spinal cord tissue...



Western blot analysis of rat lymph node ...