

## Product Datasheet

### NKX6-1 antibody (orb382917)

**Description**

NKX6-1 antibody

**Species/Host**

Rabbit

**Reactivity**

Human, Mouse, Rat

**Conjugation**

Unconjugated

**Tested Applications**

IHC-P, WB

**Immunogen**

KLH conjugated synthetic peptide derived from human NKX6-1. Please contact us for the exact immunogen sequence. The peptide is available as orb13059.

**Target**

NKX6-1

**Form/Appearance**

10 mM PBS, 0.02% sodium azide

**Concentration**

- 100 µg (in 200 µl): 0.5 mg/ml- 200 µg (in 400 µl): 0.5 mg/ml

**Storage**

Store at 4°C for up to two weeks. For long term storage, aliquot and store at -20°C, avoid freeze/thaw cycles.

**Note**

For research use only

**Isotype**

IgG

**Clonality**

Polyclonal

**Purity**

Polyclonal antibodies are purified by peptide affinity chromatography

**MW**

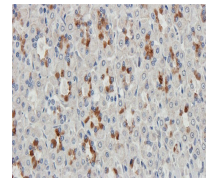
38 kDa

**Uniprot ID**
[O35762](#), [P78426](#), [Q99MA9](#)
**NCBI**
[006159](#), [006168](#)
**Entrez**
[4825](#)
**Dilution Range**

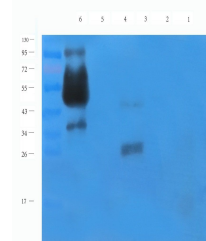
IHC-P: 1:100-600, WB: 1:200-1500

**Expiration Date**

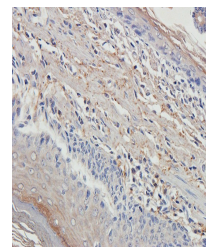
12 months from date of receipt.



IHC-P staining of rat stomach tissue usi...



Western blot analysis of mouse stomach (...



Immunohistochemical staining of paraffin...