

Product Datasheet

IL36 gamma antibody (orb382915)

Description

IL36 gamma antibody

Species/Host

Rabbit

Reactivity

Guinea pig, Human, Mouse, Rat

Conjugation

Unconjugated

Tested Applications

ICC, IF, IHC-P, WB

Immunogen

KLH conjugated synthetic peptide derived from human IL36 gamma. Please contact us for the exact immunogen sequence. The peptide is available as orb13057.

Target

IL36 gamma

Form/Appearance

10 mM PBS, 0.02% sodium azide

Concentration

- 100 µg (in 200 µl): 0.5 mg/ml- 200 µg (in 400 µl): 0.5 mg/ml

Storage

Store at 4°C for up to two weeks. For long term storage, aliquot and store at -20°C, avoid freeze/thaw cycles.

Note

For research use only

Isotype

IgG

Clonality

Polyclonal

Purity

Polyclonal antibodies are purified by peptide affinity chromatography

MW

19 kDa

Uniprot ID

[Q9NZH8](#), [Q8R460](#)

Entrez

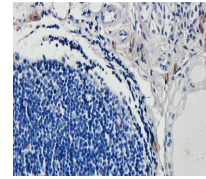
[56300](#)

Dilution Range

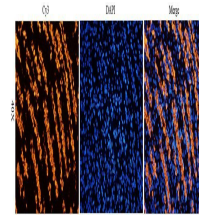
IF/ICC: 1:100-600, IHC-P: 1:100-600, WB:1:200-1500

Expiration Date

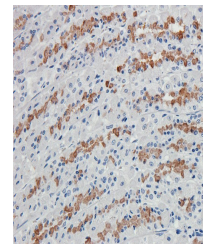
12 months from date of receipt.



IHC-P image of guinea pig lung tissue us...



Immunofluorescence analysis of rat stoma...



Immunohistochemical staining of rat stom...