

Product Datasheet

EPX antibody (orb382913)

| | |
|----------------------------|--|
| Description | EPX antibody |
| Species/Host | Rabbit |
| Reactivity | Guinea pig, Human, Mouse, Rat |
| Conjugation | Unconjugated |
| Tested Applications | IHC-P, WB |
| Immunogen | KLH conjugated synthetic peptide derived from human EPX. Please contact us for the exact immunogen sequence. The peptide is available as orb13055. |
| Target | EPX |
| Form/Appearance | 10 mM PBS, 0.02% sodium azide |
| Concentration | - 100 µg (in 200 µl): 0.5 mg/ml- 200 µg (in 400 µl): 0.5 mg/ml |
| Storage | Maintain refrigerated at 2-8°C for up to 2 weeks. For long term storage store at -20°C in small aliquots to prevent freeze-thaw cycles. |
| Note | For research use only |
| Isotype | IgG |
| Clonality | Polyclonal |
| Purity | Polyclonal antibodies are purified by peptide affinity chromatography |
| MW | 81 kDa |
| Uniprot ID | D3ZSY4, P11678, O88933 |
| NCBI | 000493, 000502 |
| Entrez | 8288 |

Biorbyt Ltd.

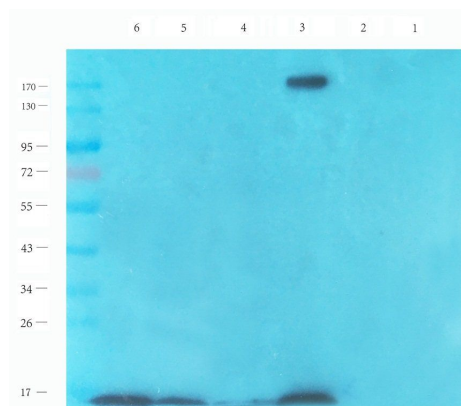
7 Signet Court, Swann's Road,
Cambridge, CB5 8LA, United Kingdom
Email: info@biorbyt.com, support@biorbyt.com
Phone: [+44 \(0\) 1223 859-353](tel:+44(0)1223859353) | Fax: [+1 \(415\) 651-8558](tel:+1(415)6518558)

Biorbyt LLC.

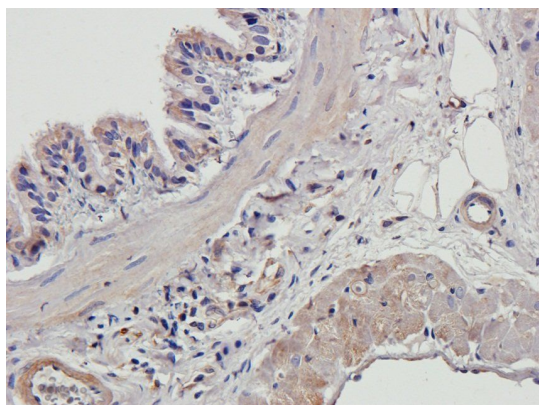
68 TW Alexander Drive,
Durham, NC, 27713, United States
Email: info@biorbyt.com, support@biorbyt.com
Phone: [+1 \(415\) 906-5211](tel:+1(415)9065211) | Fax: [+1 \(415\) 651-8558](tel:+1(415)6518558)

Dilution Range IHC-P: 1:100-500, WB: 1:200-1000

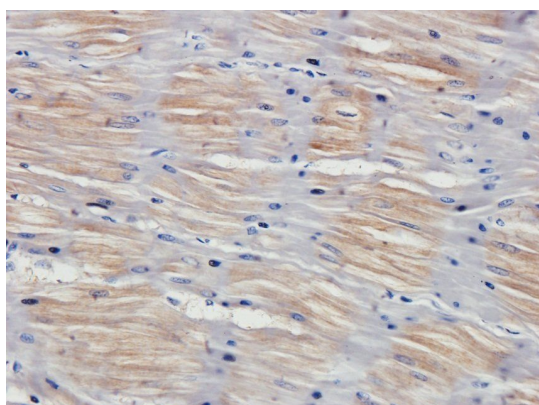
Expiration Date 12 months from date of receipt.



Western blot analysis of rat lymph node (lane 1), rat colon (lane 2), rat rectum (lane 3), rat liver (lane 4), rat lung (lane 5), mouse uterus (lane 6) using EPX antibody (1 ug/ml)



Immunohistochemical staining of paraffin embedded rat lung tissue using anti- EPX (2.5 ug/ml)



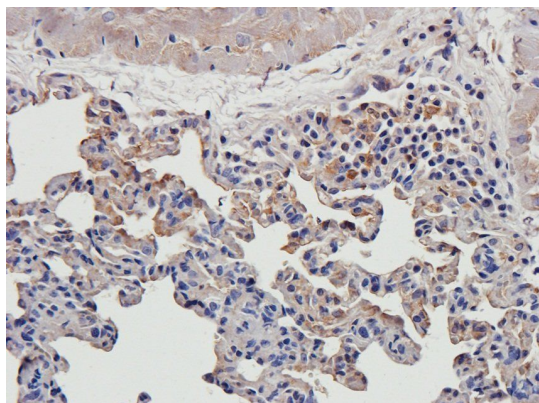
IHC-P image of pig uterus tissue using EPX antibody (2.5 ug/ml)

Biorbyt Ltd.

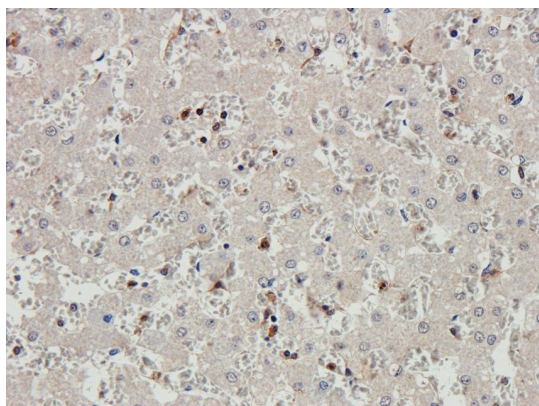
7 Signet Court, Swann's Road,
Cambridge, CB5 8LA, United Kingdom
Email: info@biorbyt.com, support@biorbyt.com
Phone: [+44 \(0\) 1223 859-353](tel:+44(0)1223859353) | Fax: [+1 \(415\) 651-8558](tel:+1(415)6518558)

Biorbyt LLC.

68 TW Alexander Drive,
Durham, NC, 27713, United States
Email: info@biorbyt.com, support@biorbyt.com
Phone: [+1 \(415\) 906-5211](tel:+1(415)9065211) | Fax: [+1 \(415\) 651-8558](tel:+1(415)6518558)



IHC-P image of guinea pig lung tissue using EPX antibody (2.5 ug/ml)



IHC-P staining of pig liver tissue using EPX antibody (2.5 ug/ml)

Biorbyt Ltd.

7 Signet Court, Swann's Road,
Cambridge, CB5 8LA, United Kingdom
Email: info@biorbyt.com, support@biorbyt.com
Phone: [+44 \(0\) 1223 859-353](tel:+44(0)1223859353) | Fax: [+1 \(415\) 651-8558](tel:+1(415)6518558)

Biorbyt LLC.

68 TW Alexander Drive,
Durham, NC, 27713, United States
Email: info@biorbyt.com, support@biorbyt.com
Phone: [+1 \(415\) 906-5211](tel:+1(415)9065211) | Fax: [+1 \(415\) 651-8558](tel:+1(415)6518558)