
Product Datasheet

BAZ2A antibody (orb382907)

Description

BAZ2A antibody

Species/Host

Rabbit

Reactivity

Human, Mouse, Porcine, Rat

Conjugation

Unconjugated

Tested Applications

ICC, IF, IHC-P, WB

Immunogen

KLH conjugated synthetic peptide derived from human BAZ2A. Please contact us for the exact immunogen sequence. The peptide is available as orb13049.

Target

BAZ2A

Form/Appearance

10 mM PBS, 0.02% sodium azide

Concentration

- 100 µg (in 200 µl): 0.5 mg/ml- 200 µg (in 400 µl): 0.5 mg/ml

Storage

Store at 4°C for up to two weeks. For long term storage, aliquot and store at -20°C, avoid freeze/thaw cycles.

Note

For research use only

Isotype

IgG

Clonality

Polyclonal

Purity

Polyclonal antibodies are purified by peptide affinity chromatography

MW

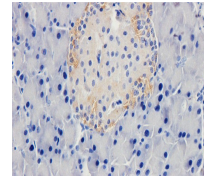
211 kDa

Uniprot ID
[Q9UIF9](#), [Q91YE5](#)
NCBI
[013449](#), [038477](#)
Entrez
[11176](#)
Dilution Range

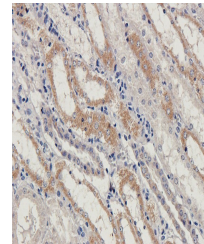
IF/ICC: 1:50-500, IHC-P: 1:50-500, WB: 1:200-1000

Expiration Date

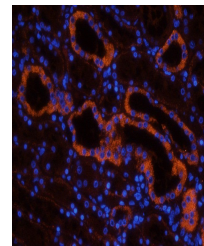
12 months from date of receipt.



IHC-P image of rat pancreas tissue using...



Immunohistochemical staining of paraffin...



IF analysis of pig spleen tissue using a...