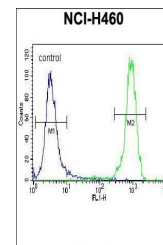
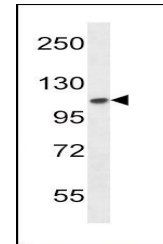


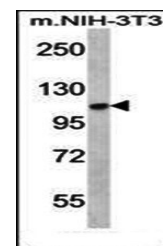
Product Datasheet

FGFR2 antibody (orb38285)

Description	Purified rabbit polyclonal antibody.
Species/Host	Rabbit
Reactivity	Human, Mouse
Conjugation	Unconjugated
Tested Applications	FC, IF, IHC-P, WB
Immunogen	Synthetic Peptide
Target	FGFR2
Form/Appearance	Purified polyclonal antibody supplied in PBS with 0.09% (W/V) sodium azide. This antibody is purified through a protein A column, followed by peptide affinity purification.
Storage	Maintain refrigerated at 2-8°C for up to 2 weeks. For long term storage store at -20°C in small aliquots to prevent freeze-thaw cycles
Note	For research use only
Isotype	Rabbit IgG
Clonality	Polyclonal
MW	92025
Uniprot ID	P21802
NCBI	NP_075418.1 , NP_001138385.1 , NP_000132.3 , NP_001138389.1 , NP_001138388.1 , NP_001138386.1 , NP_001138390.1 , NP_001138387.1 , NP_075259.4 , NP_001138391.1
Dilution Range	IF/ICC: 1:50-100, IHC-P: 1:50-100, WB: 1:1000, FACS: 1:10-50
Expiration Date	12 months from date of receipt.



Flow cytometric analysis of NCI-H460 cel...



Western blot analysis of mouse NIH-3T3 c...