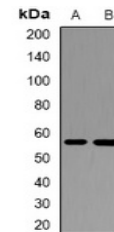


Product Datasheet

IL17RB antibody (orb382668)

Description	Rabbit polyclonal antibody to IL17RB
Species/Host	Rabbit
Reactivity	Human, Mouse
Conjugation	Unconjugated
Tested Applications	WB
Immunogen	KLH-conjugated synthetic peptide encompassing a sequence within the center region of human IL-17RB. The exact sequence is proprietary.
Target	IL17RB
Preservatives	Liquid in 0.42% Potassium phosphate, 0.87% Sodium chloride, pH 7.3, 30% glycerol, and 0.01% sodium azide.
Form/Appearance	Liquid in 0.42% Potassium phosphate, 0.87% Sodium chloride, pH 7.3, 30% glycerol, and 0.01% sodium azide.
Storage	Maintain refrigerated at 2-8°C for up to 2 weeks. For long term storage store at -20°C in small aliquots to prevent freeze-thaw cycles.
Note	For research use only
Clonality	Polyclonal
Source	Rabbit
Uniprot ID	Q9JIP3 , Q9NRM6
Entrez	50905 , 55540
Dilution Range	WB: 1:500:2000
Expiration Date	12 months from date of receipt.



Western blot analysis of IL-17RB express...