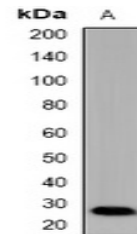


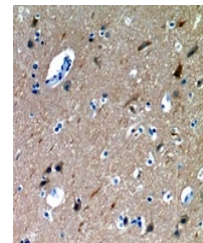
Product Datasheet

MBL2 antibody (orb382664)

Description	Rabbit polyclonal antibody to MBL2
Species/Host	Rabbit
Reactivity	Human, Mouse, Primate, Rat
Conjugation	Unconjugated
Tested Applications	IH, WB
Immunogen	KLH-conjugated synthetic peptide encompassing a sequence within the center region of human Mannose Binding Protein. The exact sequence is proprietary.
Target	MBL2
Preservatives	Liquid in 0.42% Potassium phosphate, 0.87% Sodium chloride, pH 7.3, 30% glycerol, and 0.01% sodium azide.
Form/Appearance	Liquid in 0.42% Potassium phosphate, 0.87% Sodium chloride, pH 7.3, 30% glycerol, and 0.01% sodium azide.
Storage	Maintain refrigerated at 2-8°C for up to 2 weeks. For long term storage store at -20°C in small aliquots to prevent freeze-thaw cycles.
Note	For research use only
Clonality	Polyclonal
Source	Rabbit
Uniprot ID	P08661, P41317, P11226
Entrez	64668, 17195, 4153, 100911854
Dilution Range	WB: 1:500:2000, IHC-P: 1:50:200
Expiration Date	12 months from date of receipt.



Western blot analysis of Mannose Binding...



Immunohistochemical analysis of Mannose ...