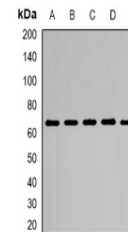


Product Datasheet

CLEC4M antibody (orb382629)

Description	Rabbit polyclonal antibody to CLEC4M
Species/Host	Rabbit
Reactivity	Human, Mouse
Conjugation	Unconjugated
Tested Applications	WB
Immunogen	KLH-conjugated synthetic peptide encompassing a sequence within the center region of human CD299. The exact sequence is proprietary.
Target	CLEC4M
Preservatives	Liquid in 0.42% Potassium phosphate, 0.87% Sodium chloride, pH 7.3, 30% glycerol, and 0.01% sodium azide.
Form/Appearance	Liquid in 0.42% Potassium phosphate, 0.87% Sodium chloride, pH 7.3, 30% glycerol, and 0.01% sodium azide.
Storage	Shipped at 4°C. Upon delivery aliquot and store at -20°C for one year. Avoid freeze/thaw cycles.
Note	For research use only
Clonality	Polyclonal
Source	Rabbit
Uniprot ID	Q9H2X3
Entrez	10332
Dilution Range	WB: 1:500:2000
Expiration Date	12 months from date of receipt.



Western blot analysis of CD299 expression...