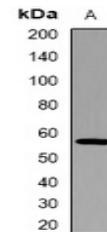


Product Datasheet

PVRL1 antibody (orb382622)

Description	Rabbit polyclonal antibody to PVRL1
Species/Host	Rabbit
Reactivity	Human, Porcine
Conjugation	Unconjugated
Tested Applications	WB
Immunogen	KLH-conjugated synthetic peptide encompassing a sequence within the center region of human PVRL1. The exact sequence is proprietary.
Target	PVRL1
Preservatives	Liquid in 0.42% Potassium phosphate, 0.87% Sodium chloride, pH 7.3, 30% glycerol, and 0.01% sodium azide.
Form/Appearance	Liquid in 0.42% Potassium phosphate, 0.87% Sodium chloride, pH 7.3, 30% glycerol, and 0.01% sodium azide.
Storage	Shipped at 4°C. Upon delivery aliquot and store at -20°C for one year. Avoid freeze/thaw cycles.
Note	For research use only
Clonality	Polyclonal
Source	Rabbit
Uniprot ID	Q15223
Entrez	5818
Dilution Range	WB: 1:500:2000
Expiration Date	12 months from date of receipt.



Western blot analysis of PVRL1 expression...