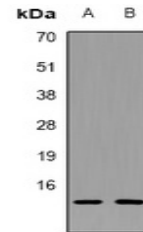


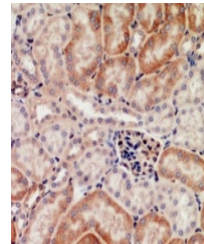
Product Datasheet

LGALS1 antibody (orb382609)

Description	Rabbit polyclonal antibody to LGALS1
Species/Host	Rabbit
Reactivity	Human, Mouse, Porcine, Rat
Conjugation	Unconjugated
Tested Applications	IH, WB
Immunogen	KLH-conjugated synthetic peptide encompassing a sequence within the center region of human Galectin 1. The exact sequence is proprietary.
Target	LGALS1
Preservatives	Liquid in 0.42% Potassium phosphate, 0.87% Sodium chloride, pH 7.3, 30% glycerol, and 0.01% sodium azide.
Form/Appearance	Liquid in 0.42% Potassium phosphate, 0.87% Sodium chloride, pH 7.3, 30% glycerol, and 0.01% sodium azide.
Storage	Maintain refrigerated at 2-8°C for up to 2 weeks. For long term storage store at -20°C in small aliquots to prevent freeze-thaw cycles.
Note	For research use only
Clonality	Polyclonal
Source	Rabbit
Uniprot ID	P11762 , P16045 , P09382
Entrez	56646 , 16852 , 3956
Dilution Range	WB: 1:500:2000, IHC-P: 1:50:200
Expiration Date	12 months from date of receipt.



Western blot analysis of Galectin 1 expr...



Immunohistochemical analysis of Galectin...