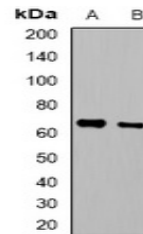


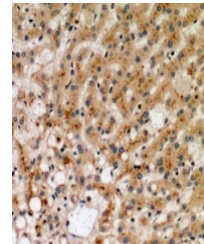
Product Datasheet

TNFRSF11A antibody (orb382608)

Description	Rabbit polyclonal antibody to TNFRSF11A
Species/Host	Rabbit
Reactivity	Human, Mouse
Conjugation	Unconjugated
Tested Applications	IH, WB
Immunogen	KLH-conjugated synthetic peptide encompassing a sequence within the N-term region of human CD265. The exact sequence is proprietary.
Target	TNFRSF11A
Preservatives	Liquid in 0.42% Potassium phosphate, 0.87% Sodium chloride, pH 7.3, 30% glycerol, and 0.01% sodium azide.
Form/Appearance	Liquid in 0.42% Potassium phosphate, 0.87% Sodium chloride, pH 7.3, 30% glycerol, and 0.01% sodium azide.
Storage	Maintain refrigerated at 2-8°C for up to 2 weeks. For long term storage store at -20°C in small aliquots to prevent freeze-thaw cycles.
Note	For research use only
Clonality	Polyclonal
Source	Rabbit
Uniprot ID	035305, Q9Y6Q6
Entrez	21934, 8792
Dilution Range	WB: 1:500:2000, IHC-P: 1:50:200
Expiration Date	12 months from date of receipt.



Western blot analysis of CD265 expressio...



Immunohistochemical analysis of CD265 st...