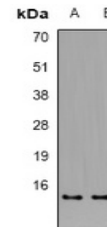


## Product Datasheet

### TUBA1A antibody (orb382595)

<b>Description</b>	Rabbit polyclonal antibody to TUBA1A
<b>Species/Host</b>	Rabbit
<b>Reactivity</b>	Human, Mouse, Rat
<b>Conjugation</b>	Unconjugated
<b>Tested Applications</b>	WB
<b>Immunogen</b>	KLH-conjugated synthetic peptide encompassing a sequence within the C-term region of human Alpha-tubulin. The exact sequence is proprietary.
<b>Target</b>	TUBA1A; TUBA1B; TUBA1C; TUBA3C; TUBA4A; TUBA8
<b>Preservatives</b>	Liquid in 0.42% Potassium phosphate, 0.87% Sodium chloride, pH 7.3, 30% glycerol, and 0.01% sodium azide.
<b>Form/Appearance</b>	Liquid in 0.42% Potassium phosphate, 0.87% Sodium chloride, pH 7.3, 30% glycerol, and 0.01% sodium azide.
<b>Storage</b>	Maintain refrigerated at 2-8°C for up to 2 weeks. For long term storage store at -20°C in small aliquots to prevent freeze-thaw cycles.
<b>Note</b>	For research use only
<b>Clonality</b>	Polyclonal
<b>Source</b>	Rabbit
<b>Uniprot ID</b>	<a href="#">Q9BQE3</a> , <a href="#">Q6AYZ1</a> , <a href="#">P68370</a> , <a href="#">Q9NY65</a> , <a href="#">P05213</a> , <a href="#">Q6P9V9</a> , <a href="#">Q71U36</a> , <a href="#">P68363</a> , <a href="#">Q13748</a> , <a href="#">P68373</a> , <a href="#">P68366</a> , <a href="#">P68369</a>
<b>Entrez</b>	<a href="#">7846</a> , <a href="#">7277</a> , <a href="#">10376</a> , <a href="#">22146</a> , <a href="#">64158</a> , <a href="#">22142</a> , <a href="#">84790</a> , <a href="#">7278</a> , <a href="#">113457</a> , <a href="#">100909441</a> , <a href="#">51807</a> , <a href="#">1962</a> , <a href="#">500929</a> , <a href="#">22143</a>
<b>Dilution Range</b>	WB: 1:500-2000
<b>Expiration Date</b>	12 months from date of receipt.



Western blot analysis of Alpha-tubulin e...