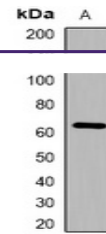


---

## Product Datasheet

### KRT2 antibody (orb382594)

<b>Description</b>	Rabbit polyclonal antibody to KRT2
<b>Species/Host</b>	Rabbit
<b>Reactivity</b>	Human, Mouse, Rat
<b>Conjugation</b>	Unconjugated
<b>Tested Applications</b>	WB
<b>Immunogen</b>	KLH-conjugated synthetic peptide encompassing a sequence within the center region of human Cytokeratin-pan. The exact sequence is proprietary.
<b>Target</b>	KRT2; KRT76; KRT3; KRT5; KRT6A; KRT6B; KRT6C; KRT71; KRT72; KRT73; KRT74; KRT75; KRT79; KRT8; KRT84
<b>Preservatives</b>	Liquid in 0.42% Potassium phosphate, 0.87% Sodium chloride, pH 7.3, 30% glycerol, and 0.01% sodium azide.
<b>Form/Appearance</b>	Liquid in 0.42% Potassium phosphate, 0.87% Sodium chloride, pH 7.3, 30% glycerol, and 0.01% sodium azide.
<b>Storage</b>	Maintain refrigerated at 2-8°C for up to 2 weeks. For long term storage store at -20°C in small aliquots to prevent freeze-thaw cycles.
<b>Note</b>	For research use only
<b>Clonality</b>	Polyclonal
<b>Source</b>	Rabbit
<b>Uniprot ID</b>	<a href="#">Q86Y46</a> , <a href="#">P08729</a> , <a href="#">Q922U2</a> , <a href="#">P13647</a> , <a href="#">Q14CN4</a> , <a href="#">P12035</a> , <a href="#">Q3UV17</a> , <a href="#">Q3SY84</a> , <a href="#">Q6IG02</a> , <a href="#">Q6P6Q2</a> , <a href="#">Q3TTY5</a> , <a href="#">P35908</a> , <a href="#">O95678</a> , <a href="#">Q7RTS7</a> , <a href="#">P48668</a> , <a href="#">P05787</a> , <a href="#">Q5XKE5</a> , <a href="#">Q01546</a> , <a href="#">Q9NSB2</a> , <a href="#">P02538</a> , <a href="#">P04259</a>
<b>Entrez</b>	<a href="#">3856</a> , <a href="#">3854</a> , <a href="#">369017</a> , <a href="#">110308</a> , <a href="#">77055</a> , <a href="#">121391</a> , <a href="#">3890</a> , <a href="#">3849</a> , <a href="#">406228</a> , <a href="#">338785</a> , <a href="#">319101</a> , <a href="#">112802</a> , <a href="#">3850</a> , <a href="#">286887</a> , <a href="#">51350</a> , <a href="#">16681</a> , <a href="#">140807</a> , <a href="#">3852</a> , <a href="#">3853</a> , <a href="#">9119</a>
<b>Dilution Range</b>	WB: 1:500:2000
<b>Expiration Date</b>	12 months from date of receipt.



Western blot analysis of Cytokeratin-pan...