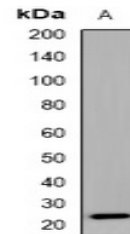


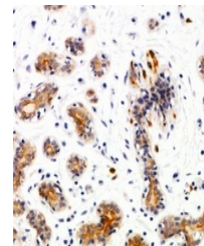
Product Datasheet

SEC22B antibody (orb382580)

Description	Rabbit polyclonal antibody to SEC22B
Species/Host	Rabbit
Reactivity	Human, Mouse, Rat
Conjugation	Unconjugated
Tested Applications	IH, WB
Immunogen	KLH-conjugated synthetic peptide encompassing a sequence within the center region of human SEC22B. The exact sequence is proprietary.
Target	SEC22B
Preservatives	Liquid in 0.42% Potassium phosphate, 0.87% Sodium chloride, pH 7.3, 30% glycerol, and 0.01% sodium azide.
Form/Appearance	Liquid in 0.42% Potassium phosphate, 0.87% Sodium chloride, pH 7.3, 30% glycerol, and 0.01% sodium azide.
Storage	Maintain refrigerated at 2-8°C for up to 2 weeks. For long term storage store at -20°C in small aliquots to prevent freeze-thaw cycles.
Note	For research use only
Clonality	Polyclonal
Source	Rabbit
Uniprot ID	Q4KM74 , O75396 , O08547
Entrez	20333 , 310710 , 9554
Dilution Range	WB: 1:500:2000, IHC-P: 1:50:200
Expiration Date	12 months from date of receipt.



Western blot analysis of SEC22B expressi...



Immunohistochemical analysis of SEC22B S...