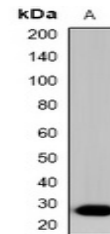


Product Datasheet

LAT antibody (orb382577)

Description	Rabbit polyclonal antibody to LAT
Species/Host	Rabbit
Reactivity	Human, Mouse, Rat
Conjugation	Unconjugated
Tested Applications	WB
Immunogen	KLH-conjugated synthetic peptide encompassing a sequence within the C-term region of human LAT. The exact sequence is proprietary.
Target	LAT
Preservatives	Liquid in 0.42% Potassium phosphate, 0.87% Sodium chloride, pH 7.3, 30% glycerol, and 0.01% sodium azide.
Form/Appearance	Liquid in 0.42% Potassium phosphate, 0.87% Sodium chloride, pH 7.3, 30% glycerol, and 0.01% sodium azide.
Storage	Maintain refrigerated at 2-8°C for up to 2 weeks. For long term storage store at -20°C in small aliquots to prevent freeze-thaw cycles.
Note	For research use only
Clonality	Polyclonal
Source	Rabbit
Uniprot ID	O70601 , O54957 , O43561
Entrez	16797 , 27040 , 81511
Dilution Range	WB: 1:500:2000
Expiration Date	12 months from date of receipt.



Western blot analysis of LAT expression ...