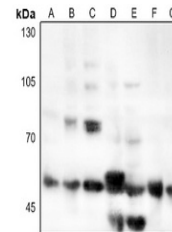


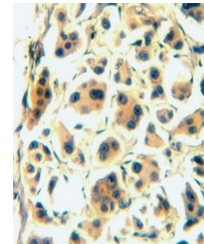
Product Datasheet

IL6R antibody (orb382563)

Description	Rabbit polyclonal antibody to IL6R
Species/Host	Rabbit
Reactivity	Human, Mouse, Rat
Conjugation	Unconjugated
Tested Applications	IH, WB
Immunogen	KLH-conjugated synthetic peptide encompassing a sequence within the center region of human CD126. The exact sequence is proprietary.
Target	IL6R
Preservatives	Liquid in 0.42% Potassium phosphate, 0.87% Sodium chloride, pH 7.3, 30% glycerol, and 0.01% sodium azide.
Form/Appearance	Liquid in 0.42% Potassium phosphate, 0.87% Sodium chloride, pH 7.3, 30% glycerol, and 0.01% sodium azide.
Storage	Maintain refrigerated at 2-8°C for up to 2 weeks. For long term storage store at -20°C in small aliquots to prevent freeze-thaw cycles.
Note	For research use only
Clonality	Polyclonal
Source	Rabbit
Uniprot ID	P08887
Entrez	3570
Dilution Range	WB: 1:500:2000
Expiration Date	12 months from date of receipt.



Western blot analysis of CD126 expressio...



Immunohistochemical analysis of CD126 st...