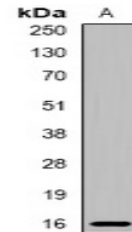


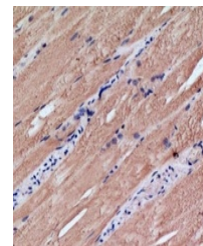
Product Datasheet

MRPS18C antibody (orb382547)

Description	Rabbit polyclonal antibody to MRPS18C
Species/Host	Rabbit
Reactivity	Human, Primate
Conjugation	Unconjugated
Tested Applications	IF, IH, WB
Immunogen	KLH-conjugated synthetic peptide encompassing a sequence within the center region of human MRPS18C. The exact sequence is proprietary.
Target	MRPS18C
Preservatives	Liquid in 0.42% Potassium phosphate, 0.87% Sodium chloride, pH 7.3, 30% glycerol, and 0.01% sodium azide.
Form/Appearance	Liquid in 0.42% Potassium phosphate, 0.87% Sodium chloride, pH 7.3, 30% glycerol, and 0.01% sodium azide.
Storage	Maintain refrigerated at 2-8°C for up to 2 weeks. For long term storage store at -20°C in small aliquots to prevent freeze-thaw cycles.
Note	For research use only
Clonality	Polyclonal
Source	Rabbit
Uniprot ID	Q9Y3D5
Entrez	51023
Dilution Range	WB: 1:500:2000, IHC-P: 1:50:200, IF/ICC: 1:50:100
Expiration Date	12 months from date of receipt.

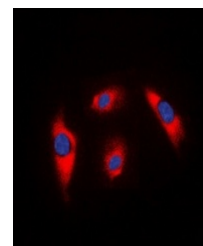


Western blot analysis of MRPS18C express...



Immunohistochemical analysis of MRPS18C

...



Immunofluorescent analysis of MRPS18C st...