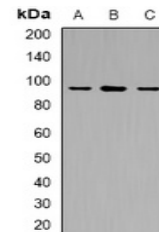


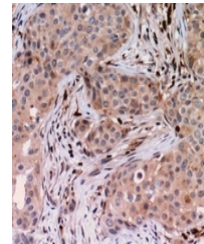
Product Datasheet

USP6NL antibody (orb382490)

Description	Rabbit polyclonal antibody to USP6NL
Species/Host	Rabbit
Reactivity	Human, Mouse, Rat
Conjugation	Unconjugated
Tested Applications	IH, WB
Immunogen	KLH-conjugated synthetic peptide encompassing a sequence within the center region of human USP6NL. The exact sequence is proprietary.
Target	USP6NL
Preservatives	Liquid in 0.42% Potassium phosphate, 0.87% Sodium chloride, pH 7.3, 30% glycerol, and 0.01% sodium azide.
Form/Appearance	Liquid in 0.42% Potassium phosphate, 0.87% Sodium chloride, pH 7.3, 30% glycerol, and 0.01% sodium azide.
Storage	Shipped at 4°C. Upon delivery aliquot and store at -20°C for one year. Avoid freeze/thaw cycles.
Note	For research use only
Clonality	Polyclonal
Source	Rabbit
Uniprot ID	Q80XC3 , Q92738
Entrez	98910 , 9712
Dilution Range	WB: 1:500:2000, IHC-P: 1:50:200
Expiration Date	12 months from date of receipt.



Western blot analysis of USP6NL expressi...



Immunohistochemical analysis of USP6NL S...