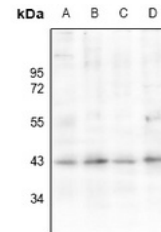


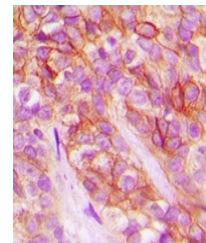
## Product Datasheet

### AGTR1 antibody (orb382444)

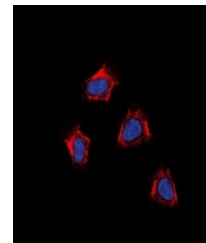
|                            |   |
|----------------------------|---|
| <b>Description</b>         | Rabbit polyclonal antibody to AGTR1   |
| <b>Species/Host</b>        | Rabbit  |
| <b>Reactivity</b>          | Human, Mouse, Porcine, Rat, Sheep   |
| <b>Conjugation</b>         | Unconjugated  |
| <b>Tested Applications</b> | IF, IH, WB  |
| <b>Immunogen</b>           | KLH-conjugated synthetic peptide encompassing a sequence within the center region of human AT1. The exact sequence is proprietary.      |
| <b>Target</b>              | AGTR1   |
| <b>Preservatives</b>       | Liquid in 0.42% Potassium phosphate, 0.87% Sodium chloride, pH 7.3, 30% glycerol, and 0.01% sodium azide.                               |
| <b>Form/Appearance</b>     | Liquid in 0.42% Potassium phosphate, 0.87% Sodium chloride, pH 7.3, 30% glycerol, and 0.01% sodium azide.                               |
| <b>Storage</b>             | Maintain refrigerated at 2-8°C for up to 2 weeks. For long term storage store at -20°C in small aliquots to prevent freeze-thaw cycles. |
| <b>Note</b>                | For research use only   |
| <b>Clonality</b>           | Polyclonal  |
| <b>Source</b>              | Rabbit  |
| <b>Uniprot ID</b>          | <b>P30556</b>   |
| <b>Entrez</b>              | <b>185</b>  |
| <b>Dilution Range</b>      | WB: 1:500:2000, IHC-P: 1:50:200, IF/ICC: 1:50:100   |
| <b>Expiration Date</b>     | 12 months from date of receipt.   |



Western blot analysis of AT1 expression ...



Immunohistochemical analysis of AT1 stai...



Immunofluorescent analysis of AT1 staini...