
Product Datasheet

Collagen 4 alpha 1 antibody (orb382133)

Description

Collagen 4 alpha 1 antibody

Species/Host

Rabbit

Reactivity

Human, Mouse, Rat

Conjugation

Unconjugated

Tested Applications

ICC, IF, IHC-P, WB

Immunogen

KLH conjugated synthetic peptide derived from human Collagen 4 alpha 1. Please contact us for the exact immunogen sequence. The peptide is available as orb13012.

Target

Collagen 4 alpha 1

Form/Appearance

10 mM PBS, 0.02% sodium azide

Concentration

- 100 µg (in 200 µl): 0.5 mg/ml- 200 µg (in 400 µl): 0.5 mg/ml

Storage

Store at 4°C for up to two weeks. For long term storage, aliquot and store at -20°C, avoid freeze/thaw cycles.

Note

For research use only

Isotype

IgG

Clonality

Polyclonal

Purity

Polyclonal antibodies are purified by peptide affinity chromatography

MW

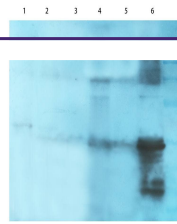
161 kDa

Uniprot ID
[F1MA59](#), [P02463](#), [P02462](#)
NCBI
[001303110](#), [001290039](#)
Entrez
[1282](#)
Dilution Range

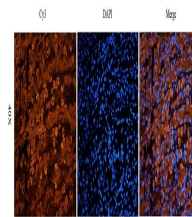
IF/ICC: 1:100-600, IHC-P: 1:100-600, WB: 1:200-1000

Expiration Date

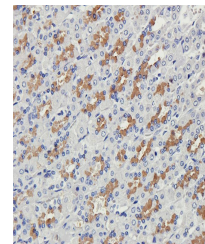
12 months from date of receipt.



WB analysis of mouse brain (lane 1), mou...



Immunofluorescence image of rat stomach ...



IHC-P image of rat stomach tissue using ...