
Product Datasheet

Kiss1 antibody (orb382132)

Description

Kiss1 antibody

Species/Host

Rabbit

Reactivity

Guinea pig, Human, Mouse, Rat

Conjugation

Unconjugated

Tested Applications

IHC-P, WB

Immunogen

KLH conjugated synthetic peptide derived from human Kiss1. Please contact us for the exact immunogen sequence. The peptide is available as orb13011.

Target

Kiss1

Form/Appearance

10 mM PBS, 0.02% sodium azide

Concentration

- 100 µg (in 200 µl): 0.5 mg/ml- 200 µg (in 400 µl): 0.5 mg/ml

Storage

Store at 4°C for up to two weeks. For long term storage, aliquot and store at -20°C, avoid freeze/thaw cycles.

Note

For research use only

Isotype

IgG

Clonality

Polyclonal

Purity

Polyclonal antibodies are purified by peptide affinity chromatography

MW

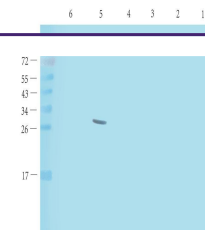
15 kDa

Uniprot ID
[Q15726](#), [Q7TSB7](#), [Q6Y4S4](#)
NCBI
[002247](#), [31](#), [002256](#)
Entrez
[3814](#)
Dilution Range

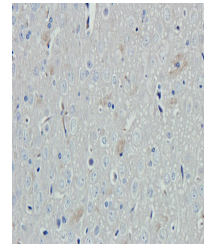
IHC-P: 1:100-600, WB: 1:200-1000

Expiration Date

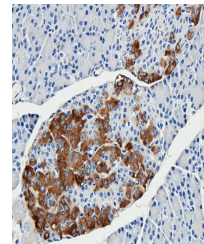
12 months from date of receipt.



Western blot analysis of mouse testis (l...



Immunohistochemical staining of paraffin...



IHC-P image of guinea pig pancreas tissue...