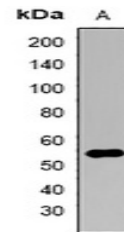


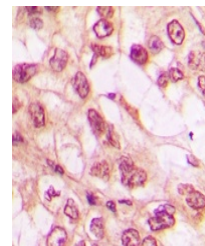
Product Datasheet

WWTR1 antibody (orb382127)

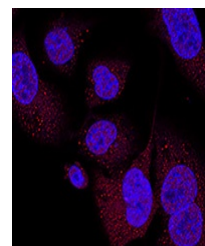
Description	Rabbit polyclonal antibody to WWTR1.
Species/Host	Rabbit
Reactivity	Human, Mouse, Rat
Conjugation	Unconjugated
Tested Applications	IF, IH, WB
Immunogen	Recombinant full length protein of human WWTR1
Target	WWTR1
Preservatives	Liquid in 0.42% Potassium phosphate, 0.87% Sodium chloride, pH 7.3, 30% glycerol, and 0.01% sodium azide.
Form/Appearance	Liquid in 0.42% Potassium phosphate, 0.87% Sodium chloride, pH 7.3, 30% glycerol, and 0.01% sodium azide.
Storage	Maintain refrigerated at 2-8°C for up to 2 weeks. For long term storage store at -20°C in small aliquots to prevent freeze-thaw cycles.
Note	For research use only
Clonality	Polyclonal
Source	Rabbit
Uniprot ID	Q9EPK5 , Q9GZV5
Entrez	97064 , 25937
Dilution Range	WB: 1:500-2000, IHC-P: 1:50-100
Expiration Date	12 months from date of receipt.



Western blot analysis of WWTR1 expression...



Immunohistochemical analysis of WWTR1 staining...



Immunofluorescent analysis of WWTR1 staining...