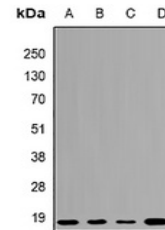


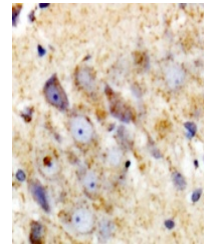
Product Datasheet

UBE2L3 antibody (orb382106)

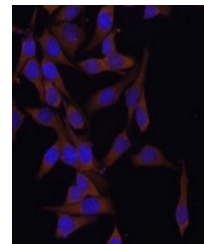
Description	Rabbit polyclonal antibody to UBE2L3.
Species/Host	Rabbit
Reactivity	Human, Mouse, Rat
Conjugation	Unconjugated
Tested Applications	IF, IH, WB
Immunogen	Recombinant full length protein of human UBCH7
Target	UBE2L3
Preservatives	Liquid in 0.42% Potassium phosphate, 0.87% Sodium chloride, pH 7.3, 30% glycerol, and 0.01% sodium azide.
Form/Appearance	Liquid in 0.42% Potassium phosphate, 0.87% Sodium chloride, pH 7.3, 30% glycerol, and 0.01% sodium azide.
Storage	Maintain refrigerated at 2-8°C for up to 2 weeks. For long term storage store at -20°C in small aliquots to prevent freeze-thaw cycles.
Note	For research use only
Clonality	Polyclonal
Source	Rabbit
Uniprot ID	P68037 , P68036
Entrez	100042355 , 22195 , 7332
Dilution Range	WB: 1:1000-2000, IHC-P: 1:50-200
Expiration Date	12 months from date of receipt.



Western blot analysis of UBCH7 expressio...



Immunohistochemical analysis of UBCH7 st...



Immunofluorescent analysis of UBCH7 stai...