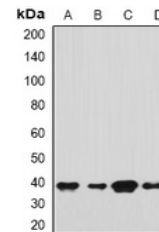


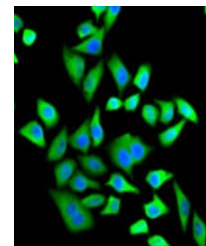
Product Datasheet

SH3GL2 antibody (orb382035)

Description	Rabbit polyclonal antibody to SH3GL2.
Species/Host	Rabbit
Reactivity	Human, Mouse, Rat
Conjugation	Unconjugated
Tested Applications	IF, WB
Immunogen	Recombinant full length protein of human SH3GL2
Target	SH3GL2
Preservatives	Liquid in 0.42% Potassium phosphate, 0.87% Sodium chloride, pH 7.3, 30% glycerol, and 0.01% sodium azide.
Form/Appearance	Liquid in 0.42% Potassium phosphate, 0.87% Sodium chloride, pH 7.3, 30% glycerol, and 0.01% sodium azide.
Storage	Maintain refrigerated at 2-8°C for up to 2 weeks. For long term storage store at -20°C in small aliquots to prevent freeze-thaw cycles.
Note	For research use only
Clonality	Polyclonal
Source	Rabbit
Uniprot ID	Q99962 , Q62420
Entrez	6456 , 20404
Dilution Range	WB: 1:500-2000
Expiration Date	12 months from date of receipt.



Western blot analysis of SH3GL2 expressi...



Immunofluorescent analysis of SH3GL2 sta...