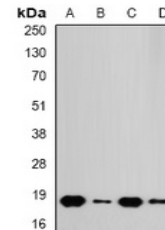


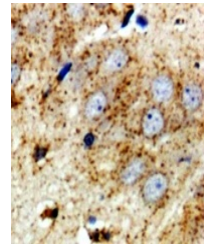
Product Datasheet

RPS10 antibody (orb382016)

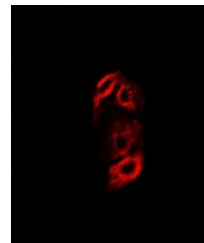
Description	Rabbit polyclonal antibody to RPS10.
Species/Host	Rabbit
Reactivity	Human, Mouse, Rat
Conjugation	Unconjugated
Tested Applications	IF, IH, IP, WB
Immunogen	Recombinant full length protein of human RPS10
Target	RPS10
Preservatives	Liquid in 0.42% Potassium phosphate, 0.87% Sodium chloride, pH 7.3, 30% glycerol, and 0.01% sodium azide.
Form/Appearance	Liquid in 0.42% Potassium phosphate, 0.87% Sodium chloride, pH 7.3, 30% glycerol, and 0.01% sodium azide.
Storage	Maintain refrigerated at 2-8°C for up to 2 weeks. For long term storage store at -20°C in small aliquots to prevent freeze-thaw cycles.
Note	For research use only
Clonality	Polyclonal
Source	Rabbit
Uniprot ID	P63325 , P46783 , P63326
Entrez	67097 , 6204 , 100363439 , 81773
Dilution Range	WB: 1:500-2000, IHC-P: 1:50-200, IF/ICC: 1:20-50, IP: 1:20-50
Expiration Date	12 months from date of receipt.



Western blot analysis of RPS10 expressio...



Immunohistochemical analysis of RPS10 st...



Immunofluorescent analysis of RPS10 stai...