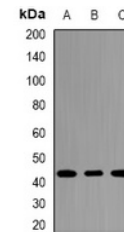


## Product Datasheet

### NR2E1 antibody (orb381920)

|                            |   |
|----------------------------|---|
| <b>Description</b>         | Rabbit polyclonal antibody to NR2E1.  |
| <b>Species/Host</b>        | Rabbit  |
| <b>Reactivity</b>          | Human   |
| <b>Conjugation</b>         | Unconjugated  |
| <b>Tested Applications</b> | WB  |
| <b>Immunogen</b>           | Recombinant full length protein of human TLX  |
| <b>Target</b>              | NR2E1   |
| <b>Preservatives</b>       | Liquid in 0.42% Potassium phosphate, 0.87% Sodium chloride, pH 7.3, 30% glycerol, and 0.01% sodium azide.                               |
| <b>Form/Appearance</b>     | Liquid in 0.42% Potassium phosphate, 0.87% Sodium chloride, pH 7.3, 30% glycerol, and 0.01% sodium azide.                               |
| <b>Storage</b>             | Maintain refrigerated at 2-8°C for up to 2 weeks. For long term storage store at -20°C in small aliquots to prevent freeze-thaw cycles. |
| <b>Note</b>                | For research use only   |
| <b>Clonality</b>           | Polyclonal  |
| <b>Source</b>              | Rabbit  |
| <b>Uniprot ID</b>          | <a href="#">Q9Y466</a>  |
| <b>Entrez</b>              | <a href="#">7101</a>  |
| <b>Dilution Range</b>      | WB: 1:500-2000, IF/ICC: 1:10-100  |
| <b>Expiration Date</b>     | 12 months from date of receipt.   |



Western blot analysis of TLX expression ...