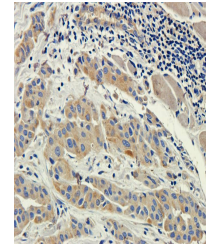


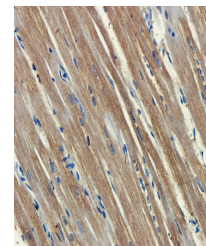
Product Datasheet

Factor VIII antibody (orb381895)

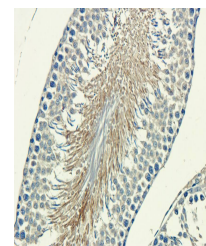
| | |
|----------------------------|--|
| Description | Factor VIII antibody |
| Species/Host | Rabbit |
| Reactivity | Human, Mouse, Porcine, Rat |
| Conjugation | Unconjugated |
| Tested Applications | ICC, IF, IHC-P, WB |
| Immunogen | KLH conjugated synthetic peptide derived from human Factor VIII. Please contact us for the exact immunogen sequence. The peptide is available as orb13003. |
| Target | Factor VIII |
| Form/Appearance | 10 mM PBS, 0.02% sodium azide |
| Concentration | - 100 µg (in 200 µl): 0.5 mg/ml- 200 µg (in 400 µl): 0.5 mg/ml |
| Storage | Store at 4°C for up to two weeks. For long term storage, aliquot and store at -20°C, avoid freeze/thaw cycles. |
| Note | For research use only |
| Isotype | IgG |
| Clonality | Polyclonal |
| Purity | Polyclonal antibodies are purified by peptide affinity chromatography |
| MW | 55 kDa |
| Uniprot ID | P00451 |
| Dilution Range | IF/ICC: 1:100-500, IHC-P: 1:100-500, WB: 1:200-1000 |
| Expiration Date | 12 months from date of receipt. |



IHC-P image of human breast cancer tissue...



IHC-P image of pig heart tissue using an...



Immunohistochemical staining of paraffin...