

---

## Product Datasheet

### 67kDa Laminin Receptor/RPSA Antibody (orb381096)

**Description**

67kDa Laminin Receptor/RPSA Antibody


**Species/Host**

Rabbit

**Reactivity**

Human

**Conjugation**

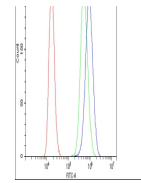
Unconjugated

**Tested Applications**

FC, ICC, IF, IHC, IHC-Fr, WB

**Immunogen**

E. coli-derived human RPSA recombinant protein (Position: S2-S138). Human RPSA shares 100% and 99.3% amino acid (aa) sequence identity with mouse and rat RPSA, respectively.



Flow Cytometry analysis of PC-3 cells us...

**Form/Appearance**

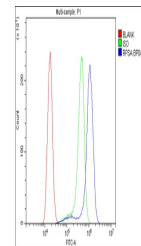
Lyophilized

**Concentration**

Adding 0.2 ml of distilled water will yield a concentration of 500 µg/ml.

**Storage**

Store at -20°C for one year from date of receipt. After reconstitution, at 4°C for one month. It can also be aliquotted and stored frozen at -20°C for six months. Avoid repeated freeze-thaw cycles.



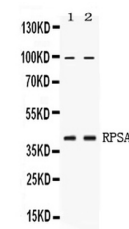
Flow Cytometry analysis of A431 cells us...

**Note**

For research use only

**Application notes**

Tested Species: In-house tested species with positive results. By Heat: Boiling the paraffin sections in 10mM citrate buffer, pH6.0, for 20mins is required for the staining of formalin/paraffin sections. Other applications have not been tested. Optimal dilutions should be determined by end users. . Add 0.2ml of distilled water will yield a concentration of 500ug/ml.



WB analysis of RPSA using anti-RPSA anti...

**Isotype**

Rabbit IgG

**Clonality**

Polyclonal

**MW**

32854 MW

**Uniprot ID**
[P08865](https://www.uniprot.org/uniprot/P08865)
**Expiration Date**

12 months from date of receipt.