
Product Datasheet

Lactate Dehydrogenase B/LDHB Antibody (orb381078)

Description

Lactate Dehydrogenase B/LDHB Antibody


Species/Host

Rabbit

Reactivity

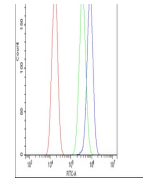
Human, Monkey, Mouse, Rat

Conjugation

Unconjugated

Tested Applications

FC, ICC, IF, IHC, WB



Flow Cytometry analysis of A549 cells us...

Immunogen

E. coli-derived human LDHB recombinant protein (Position: E237-L334). Human LDHB shares 98% amino acid (aa) sequence identity with both mouse and rat LDHB.

Form/Appearance

Lyophilized

Concentration

Adding 0.2 ml of distilled water will yield a concentration of 500 µg/ml.

Storage

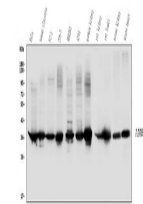
Store at -20°C for one year from date of receipt. After reconstitution, at 4°C for one month. It can also be aliquotted and stored frozen at -20°C for six months. Avoid repeated freeze-thaw cycles.

Note

For research use only

Application notes

Tested Species: In-house tested species with positive results. By Heat: Boiling the paraffin sections in 10mM citrate buffer, pH6.0, for 20mins is required for the staining of formalin/paraffin sections. Other applications have not been tested. Optimal dilutions should be determined by end users. Add 0.2ml of distilled water will yield a concentration of 500ug/ml.



WB: Lane 1: human HeLa cell; 2: human place...

Isotype

Rabbit IgG

Clonality

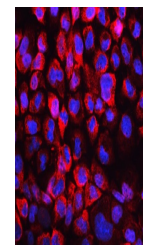
Polyclonal

MW

36638 MW

Uniprot ID
[P07195](https://www.uniprot.org/entry/P07195)
Expiration Date

12 months from date of receipt.



IF analysis of LDHB using anti-LDHB anti...