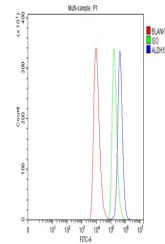


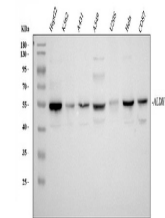
Product Datasheet

ALDH1B1 Antibody (orb381039)

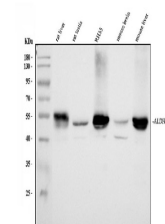
Description	ALDH1B1 Antibody
Species/Host	Rabbit
Reactivity	Human, Monkey, Mouse, Rat
Conjugation	Unconjugated
Tested Applications	FC, ICC, IF, IHC, WB
Immunogen	A synthetic peptide corresponding to a sequence at the N-terminus of human ALDH1B1 (116-156aa RYVLASLETLDNGKPFQESYALDLDEVIKVYRYFAGWADK W), different from the related mouse sequence by one amino acid, and from the related rat sequence by two amino acids.
Form/Appearance	Lyophilized
Concentration	Adding 0.2 ml of distilled water will yield a concentration of 500 µg/ml.
Storage	Store at -20°C for one year from date of receipt. After reconstitution, at 4°C for one month. It can also be aliquotted and stored frozen at -20°C for six months. Avoid repeated freeze-thaw cycles.
Note	For research use only
Application notes	Tested Species: In-house tested species with positive results. Other applications have not been tested. Optimal dilutions should be determined by end users. Add 0.2ml of distilled water will yield a concentration of 500ug/ml.
Isotype	Rabbit IgG
Clonality	Polyclonal
MW	57206 MW
Uniprot ID	P30837
Expiration Date	12 months from date of receipt.



Flow Cytometry analysis of HEL cells using anti-ALDH1B1 antibody.



Western blot analysis of ALDH1B1 using anti-ALDH1B1 antibody.



Western blot analysis of ALDH1B1 using anti-ALDH1B1 antibody.