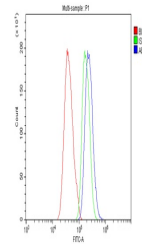


Product Datasheet

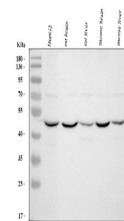
ABAT Antibody (orb381021)

Description	ABAT Antibody
Species/Host	Rabbit
Reactivity	Human, Mouse, Rat
Conjugation	Unconjugated
Tested Applications	FC, ICC, IF, WB
Immunogen	E. coli-derived human ABAT recombinant protein (Position: K388-K500). Human ABAT shares 93.9% and 94.5% amino acid (aa) sequence identity with mouse and rat ABAT, respectively.
Form/Appearance	Lyophilized
Concentration	Adding 0.2 ml of distilled water will yield a concentration of 500 µg/ml.
Storage	Store at -20°C for one year from date of receipt. After reconstitution, at 4°C for one month. It can also be aliquotted and stored frozen at -20°C for six months. Avoid repeated freeze-thaw cycles.
Note	For research use only
Application notes	Tested Species: In-house tested species with positive results. Other applications have not been tested. Optimal dilutions should be determined by end users. Add 0.2ml of distilled water will yield a concentration of 500ug/ml.
Isotype	Rabbit IgG
Clonality	Polyclonal
MW	56439 MW
Uniprot ID	P80404
Expiration Date	12 months from date of receipt.

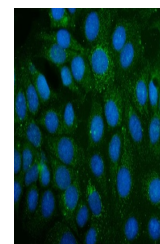


Flow Cytometry analysis of CACO-2 cells

...



WB analysis of ABAT using anti-ABAT anti...



IF analysis of ABAT using anti-ABAT anti...