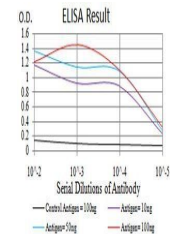


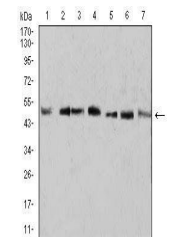
Product Datasheet

KLF2 Antibody (orb379692)

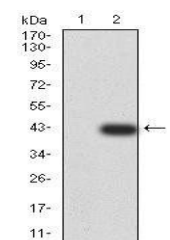
Description	Mouse monoclonal antibody to KLF2
Species/Host	Mouse
Reactivity	Human, Mouse
Conjugation	Unconjugated
Tested Applications	ELISA, WB
Immunogen	Purified recombinant fragment of human KLF2 (AA: 251-355) expressed in E. Coli.
Preservatives	Purified antibody in PBS with 0.05% sodium azide
Concentration	1mg/ml
Storage	Maintain refrigerated at 2-8°C for up to 2 weeks. For long term storage store at -20°C in small aliquots to prevent freeze-thaw cycles.
Note	For research use only
Isotype	Mouse IgG1
Clonality	Monoclonal
MW	37.4kDa
Entrez	10365
Dilution Range	WB: 1/500 - 1/2000; ELISA: 1/10000
Expiration Date	12 months from date of receipt.



Line graph illustrates about the Ag-Ab r...



Western blot analysis of A431 (Lane 1), ...



Western blot analysis of HEK293 cell lys...