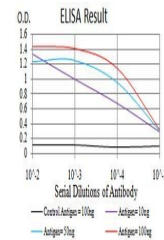


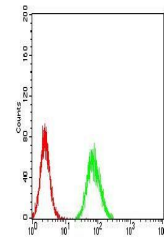
Product Datasheet

CALB2 Antibody (orb379632)

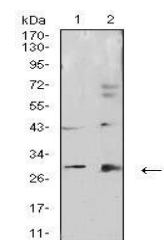
Description	Mouse monoclonal antibody to CALB2
Species/Host	Mouse
Reactivity	Human, Monkey
Conjugation	Unconjugated
Tested Applications	ELISA, FC, WB
Immunogen	Purified recombinant fragment of human CALB2 (AA: 172-271) expressed in E. Coli.
Preservatives	Purified antibody in PBS with 0.05% sodium azide
Concentration	1mg/ml
Storage	Maintain refrigerated at 2-8°C for up to 2 weeks. For long term storage store at -20°C in small aliquots to prevent freeze-thaw cycles.
Note	For research use only
Isotype	Mouse IgG1
Clonality	Monoclonal
MW	31.5kDa
Entrez	794
Dilution Range	WB: 1/500 - 1/2000; RCM: 1/200 - 1/400; ELISA: 1/10000
Expiration Date	12 months from date of receipt.



Line graph illustrates about the Ag-Ab r...



Flow cytometric analysis of Hela cells u...



Western blot analysis of HepG2 (Lane 1) ...