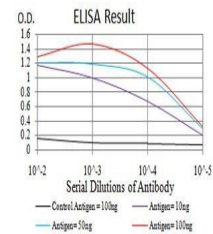


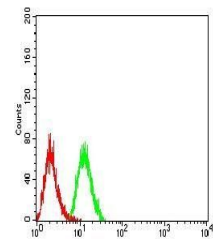
Product Datasheet

PSMC3 Antibody (orb379625)

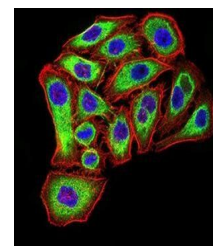
Description	Mouse monoclonal antibody to PSMC3
Species/Host	Mouse
Reactivity	Human, Monkey, Rat
Conjugation	Unconjugated
Tested Applications	ELISA, FC, ICC, IHC, WB
Immunogen	Purified recombinant fragment of human PSMC3 (AA: 53-152) expressed in E. Coli.
Preservatives	Purified antibody in PBS with 0.05% sodium azide
Concentration	1mg/ml
Storage	4°C; -20°C for long term storage. Avoid freeze/thaw cycles.
Note	For research use only
Isotype	Mouse IgG1
Clonality	Monoclonal
MW	49kDa
Entrez	5702
Dilution Range	WB: 1/500 - 1/2000; IHC: 1/200 - 1/1000; ICC: 1/200 - 1/1000; RCM: 1/200 - 1/400; ELISA: 1/10000
Expiration Date	12 months from date of receipt.



Line graph illustrates about the Ag-Ab r...



Flow cytometric analysis of HeLa cells u...



Immunofluorescence analysis of MCF-7 cel...