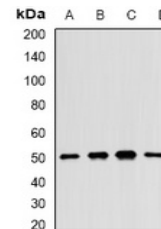


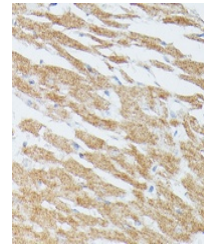
Product Datasheet

MAP2K5 antibody (orb378166)

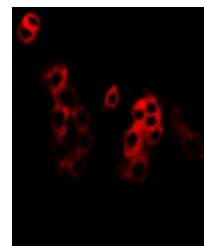
Description	Rabbit polyclonal antibody to MAP2K5.
Species/Host	Rabbit
Reactivity	Human, Mouse, Rat
Conjugation	Unconjugated
Tested Applications	IF, IH, WB
Immunogen	Recombinant full length protein of human MKK5
Target	MAP2K5
Preservatives	Liquid in 0.42% Potassium phosphate, 0.87% Sodium chloride, pH 7.3, 30% glycerol, and 0.01% sodium azide.
Form/Appearance	Liquid in 0.42% Potassium phosphate, 0.87% Sodium chloride, pH 7.3, 30% glycerol, and 0.01% sodium azide.
Storage	Maintain refrigerated at 2-8°C for up to 2 weeks. For long term storage store at -20°C in small aliquots to prevent freeze-thaw cycles.
Note	For research use only
Clonality	Polyclonal
Source	Rabbit
Uniprot ID	Q9WVS7 , Q62862 , Q13163
Entrez	29568 , 23938 , 5607
Dilution Range	WB: 1:500-2000, IF/ICC: 1:50-100
Expiration Date	12 months from date of receipt.



Western blot analysis of MKK5 expression...



Immunohistochemical analysis of MKK5 staining...



Immunofluorescent analysis of MKK5 staining...